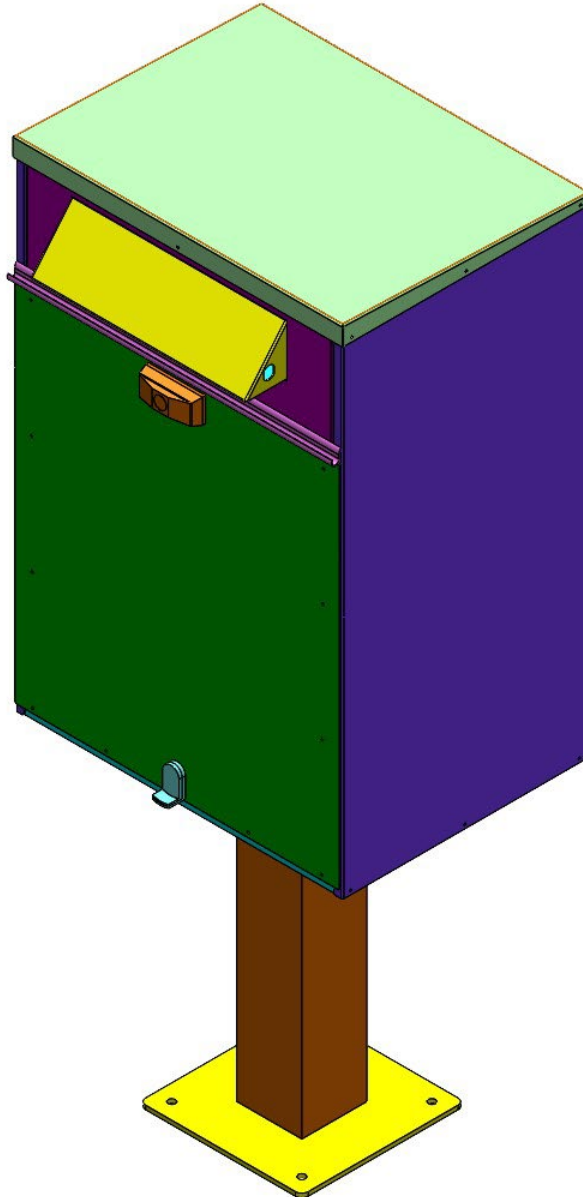


## Post Mount Depository Installation Instructions (62-0900)



**PLEASE READ THE DIRECTIONS BEFORE ATTEMPTING INSTALLATION**

**REQUIRED TOOLS**

- 3/8" MASONRY DRILL BIT
- HAMMER
- WRENCH: 7/16" USE ON BASE
- WRENCH: 9/16" USE ON HOOD
- RATCHET: WITH 7/16" DEEP SOCKET
- MARKER OR PENCIL (FOR MARKING HOLE LOCATION)

If the return is being mounted on a sidewalk or island of some type, make sure to align the front edge of the return with the edge of the curb. This will ensure that the unit is not hanging over into the pathway.

Installation will require 2 (two) people.

\*If the surface is not leveled, the unit will not align properly. Shimming may be required if the surface area is not level.

- Place the unit in the desired location on level concrete or concrete pad.
- Mark the hole locations using the mounting plate.
- Drill four holes into the concrete with the 3/8in bit.
- Place the expansion anchors into the holes.
- Set the expansion anchors using a hammer leaving at least 1.5in exposed
- Place the unit back over the set anchors, then place the washer over the anchor and tighten the nut to the anchor.

For reference, see figure 1 below.

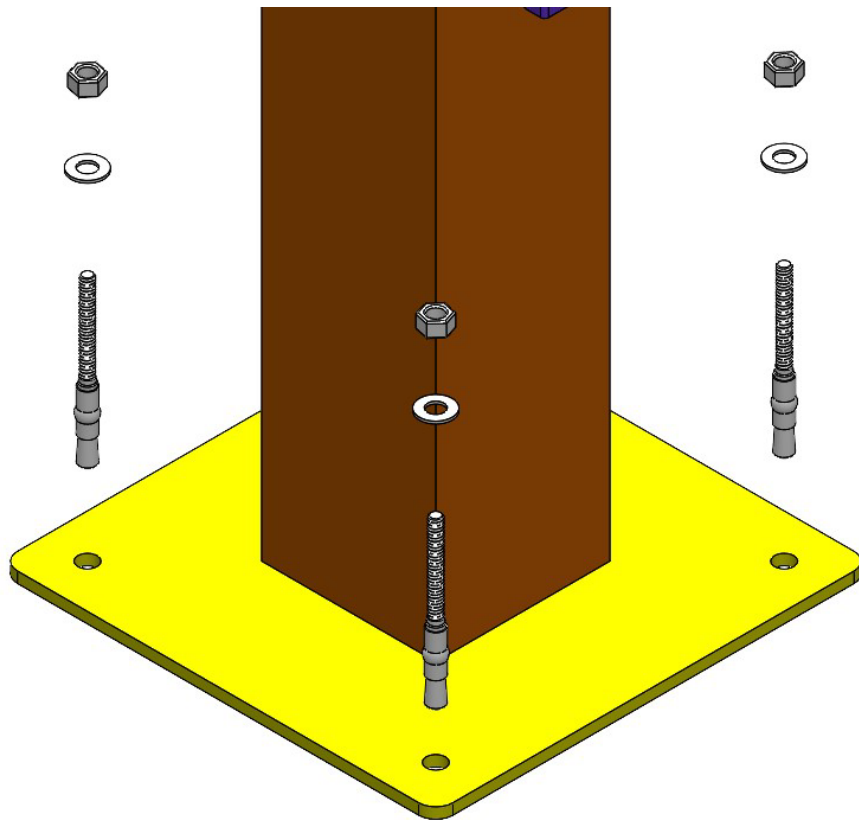


Figure 1